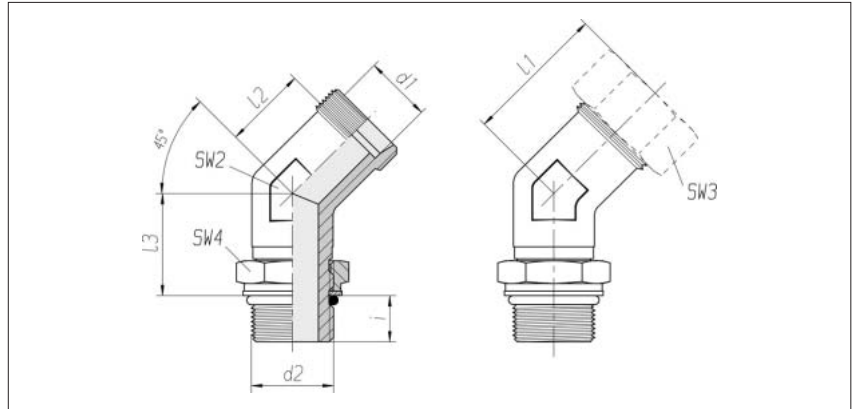


Adjustable 45° stud elbows with lock nut

Thread:
metric fine thread,
ISO 6149
straight

Sealed with O-ring



Series	Pressure	d2	SW2	SW3	SW4	l1* approx.	l2	l3	i	Nm -10 %	kg/100 approx.	Order No. Single component	Order No. **
L 6	PN 315	M 10 x 1	19	14	14	29	14	20	7	15	6.1	1 1 45 00 20 81***	1 1 45 00 20 XX
L 8	PN 315	M 12 x 1.5	19	17	17	31	16	22	10	25	7.1	1 1 45 05 20 81	1 1 45 05 20 XX
L 10	PN 315	M 14 x 1.5	19	19	19	32	17	25	10	35	8.1	1 1 45 10 20 81	1 1 45 10 20 XX
L 12	PN 315	M 16 x 1.5	19	22	22	34	19	26	10	40	8.7	1 1 45 15 20 81	1 1 45 15 20 XX
L 15	PN 315	M 18 x 1.5	19	27	24	32	17	30	11	45	9.7	1 1 45 20 20 81	1 1 45 20 20 XX
L 18	PN 315	M 22 x 1.5	24	32	27	35.5	19	33	12	60	17.7	1 1 45 25 20 81	1 1 45 25 20 XX
L 22	PN 160	M 27 x 2	27	36	32	39	22.5	35	14	100	19.8	1 1 45 30 20 81	1 1 45 30 20 XX
L 28	PN 160	M 33 x 2	36	41	41	41	24.5	38	14	160	32.3	1 1 45 35 20 81	1 1 45 35 20 XX
L 35	PN 160	M 42 x 2	41	50	50	50.5	27	48	14	210	53.7	1 1 45 40 20 81	1 1 45 40 20 XX
L 42	PN 160	M 48 x 2	50	60	55	50	40	49	16	260	69.5	1 1 45 45 20 81	1 1 45 45 20 XX
S 6	PN 400	M 12 x 1.5	19	17	17	31	16	22	10	35	7.6	1 1 45 50 20 81	1 1 45 50 20 XX
S 8	PN 400	M 14 x 1.5	19	19	19	32	17	26	10	45	9.1	1 1 45 55 20 81	1 1 45 55 20 XX
S 10	PN 400	M 16 x 1.5	19	22	22	34.5	18	27	11	55	10.4	1 1 45 60 20 81	1 1 45 60 20 XX
S 12	PN 400	M 18 x 1.5	19	24	24	33.5	17	31	12	70	12.4	1 1 45 65 20 81	1 1 45 65 20 XX
S 16	PN 400	M 22 x 1.5	24	30	27	42.5	19	35	14	100	18.3	1 1 45 75 20 81	1 1 45 75 20 XX
S 20	PN 400	M 27 x 2	27	36	32	43	21.5	39	16	170	27.7	1 1 45 80 20 81	1 1 45 80 20 XX
S 25	PN 315	M 33 x 2	36	46	41	47	23	44	16	310	45.2	1 1 45 85 20 81	1 1 45 85 20 XX
S 30	PN 250	M 42 x 2	41	50	50	50.5	24	51	17	330	72.0	1 1 45 90 20 81	1 1 45 90 20 XX
S 38	PN 200	M 48 x 2	50	60	55	59	28	54	19	420	104.2	1 1 45 95 20 81	1 1 45 95 20 XX

Supplementary to Order No. for complete fitting tube connection	Supplementary to Order No.
2S	07
ES-4	09
BV-10	Refer to the front page

* Apply to complete fittings with 2S or ES-4 tube connection components.
For BV-10 Refer to the front page.

** With union nut and 2S, ES-4 or BV-10 tube connection components

*** Sample product code, see: VEE06LMOROMD