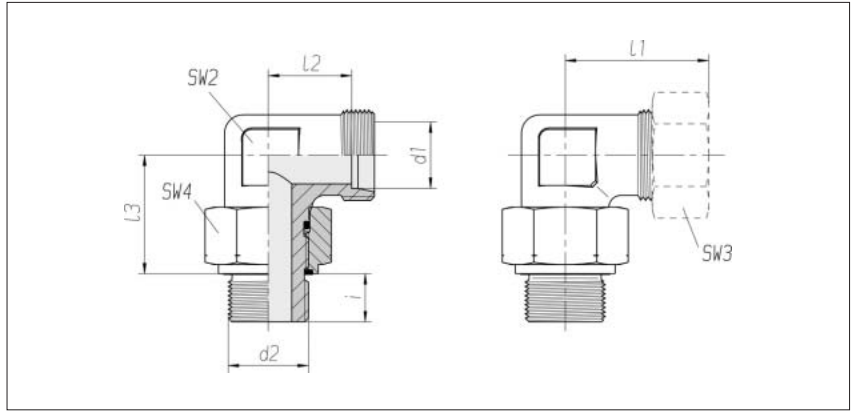


## Adjustable elbow couplings with lock nut

Thread:  
Whitworth pipe thread,  
straight

Sealed with PEFLEX seal



Series Tube OD d1	Pressure	d2		SW2	SW3	SW4	l1* approx.	l2	l3	i	kg/100 approx. Single component	Order No.	Order No. **
L 6	PN 315	G 1/8 A		14	14	14	29	14	21	8	4.1	1 1 44 00 20 81	1 1 44 00 20 XX
L 6	PN 315	G 1/4 A		17	14	19	31	16	26	12	7.8	1 1 44 01 20 81	1 1 44 01 20 XX
L 8	PN 315	G 1/4 A		17	17	19	31	16	26	12	7.9	1 1 44 05 20 81	1 1 44 05 20 XX
L 10	PN 315	G 1/4 A		17	19	19	32	17	26	12	7.9	1 1 44 10 20 81	1 1 44 10 20 XX
L 12	PN 315	G 3/8 A		19	22	22	34	19	29	12	11.2	1 1 44 15 20 81	1 1 44 15 20 XX
L 12	PN 315	G 1/4 A		17	22	19	32	17	26	12	7.6	1 1 44 16 20 81	1 1 44 16 20 XX
L 12	PN 250	G 1/2 A		22	22	27	36	21	30	14	15.4	1 1 44 17 20 81	1 1 44 17 20 XX
L 15	PN 250	G 1/2 A		22	27	27	36	21	30	14	15.3	1 1 44 20 20 81	1 1 44 20 20 XX
L 18	PN 250	G 1/2 A		27	32	27	42	25.5	37	14	25.9	1 1 44 25 20 81	1 1 44 25 20 XX
L 22	PN 160	G 1/2 A		27	36	27	44	27.5	37	14	24.5	1 1 44 31 20 81	1 1 44 31 20 XX
L 22	PN 160	G 3/4 A		27	36	36	44	27.5	39	16	33.6	1 1 44 30 20 81	1 1 44 30 20 XX
L 28	PN 160	G 1 A		41	41	41	49	32.5	50.5	18	70.5	1 1 44 35 20 81	1 1 44 35 20 XX
L 28	PN 160	G 3/4 A		36	41	36	47	30.5	44.5	16	43.7	1 1 44 36 20 81	1 1 44 36 20 XX
L 35	PN 160	G 1 1/4 A		50	50	50	59.5	36	56	20	111.5	1 1 44 40 20 81	1 1 44 40 20 XX
L 42	PN 160	G 1 1/2 A		50	60	55	63	40	57.5	22	115.4	1 1 44 45 20 81	1 1 44 45 20 XX

Supplementary to Order No. for complete fitting tube connection	Supplementary to Order No.
2S	07
ES-4	09
BV-10	Refer to the front page

\* Apply to complete fittings with  
2S or ES-4 tube connection  
components.  
For BV-10 Refer to the front page.

\*\* With union nut and 2S, ES-4  
or BV-10 tube connection  
components