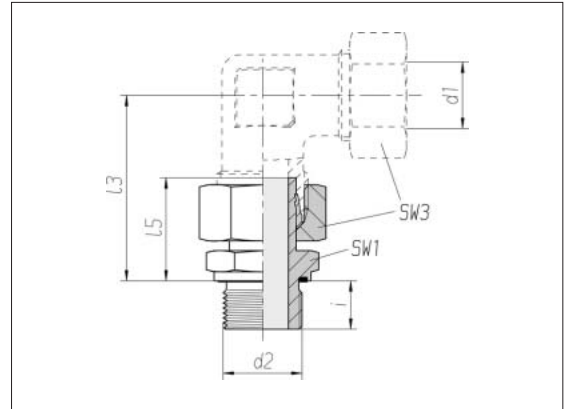


## Straight stud standpipe adapters

Thread:  
Whitworth pipe thread,  
straight

Sealed with PEFLEX seal

Tube socket pre-assembled



Series	Pressure	d2		SW1	SW3	l3	l5	i	Nm -10 %	kg/100 approx.	Order No.
Tube OD d1											
L 6	PN 315	G 1/8 A		14	14	36.5	24.5	8	20	2.3	0 1 77 80 20 07*
L 8	PN 315	G 1/4 A		19	17	43.5	29.5	12	50	4.6	0 1 77 81 20 07
L 10	PN 315	G 1/4 A		19	19	42.5	27.5	12	50	5.0	0 1 77 82 20 07
L 12	PN 315	G 1/4 A		19	22	50.5	33.5	12	50	7.0	1 1 77 03 20 07
L 12	PN 315	G 3/8 A		22	22	51	34	12	80	8.0	0 1 77 83 20 07
L 12	PN 315	G 1/2 A		27	22	51.5	34.5	14	100	10.1	1 1 77 01 20 07
L 15	PN 315	G 1/2 A		27	27	53	32	14	100	11.7	0 1 77 84 20 07
L 18	PN 315	G 1/2 A		27	32	55	31.5	14	100	13.4	0 1 77 85 20 07
L 22	PN 160	G 1/2 A		27	36	60	32.5	14	100	15.4	0 1 77 74 20 07
L 22	PN 160	G 3/4 A		32	36	60	32.5	16	180	18.4	0 1 77 86 20 07
L 28	PN 160	G 1 A		41	41	65.5	35	18	230	26.8	0 1 77 87 20 07
L 35	PN 160	G 1 1/4 A		50	50	77	42.5	20	330	43.9	0 1 77 88 20 07
L 42	PN 160	G 1 1/2 A		55	60	86.5	46.5	22	500	62.3	0 1 77 89 20 07
S 6	PN 630	G 1/4 A		19	17	43	27	12	60	4.9	0 1 77 90 20 07
S 8	PN 630	G 1/4 A		19	19	46.5	29.5	12	60	5.8	0 1 77 91 20 07
S 10	PN 630	G 3/8 A		22	22	49.5	32	12	90	8.7	0 1 77 92 20 07
S 12	PN 630	G 3/8 A		22	24	55.5	34	12	90	9.9	0 1 77 93 20 07
S 12	PN 630	G 1/2 A		27	24	56	34.5	14	150	12.8	0 1 77 79 20 07
S 14	PN 630	G 1/2 A		27	27	58.5	36.5	14	150	15.4	0 1 77 94 20 07
S 16	PN 400	G 1/2 A		27	30	61.5	37	14	150	16.2	0 1 77 95 20 07
S 20	PN 400	G 3/4 A		32	36	69.5	43	16	200	25.5	0 1 77 96 20 07
S 25	PN 400	G 1 A		41	46	78	48	18	250	48.8	0 1 77 97 20 07
S 30	PN 400	G 1 1/4 A		50	50	86.5	51	20	500	66.7	0 1 77 98 20 07
S 38	PN 315	G 1 1/2 A		55	60	101	60	22	600	95.3	0 1 77 99 20 07

\* Sample product code, see:  
EVGE06LRED