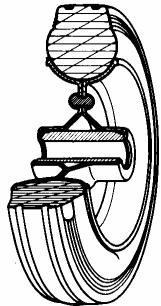


SERIES 53



STANDARD RUBBER WHEELS PRESSED STEEL DISCS CENTRE SWIVEL BOLT HOLE BRACKET TYPE "SL"

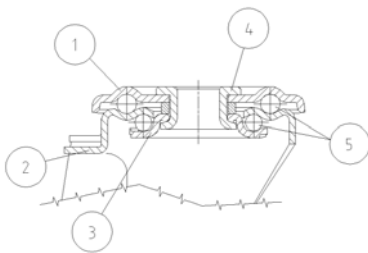
Wheel description



- Tread:** Standard rubber tread; hardness 85 +/-3 Shore A.
Centre: made of two riveted galvanized pressed steel discs.
Hub: the hub is available with plain bore and with roller bearings.

Bracket description

Standard duty bracket type SL (max. carrying capacity 130 daN)



- 1) **Plate:** electrolytically galvanised steel plate
 - 2) **Fork:** electrolytically galvanised steel plate
 - 3) **Ball Racing Ring:** electrolytically galvanised steel plate
 - 4) **King Pin:** incorporated in top plate and cold riveted
 - 5) **Swivel actions:** double ring of greased balls
- Finishing:** electrolytic galvanisation
Fitting: bolt hole