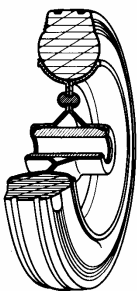


SERIES 53



STANDARD RUBBER WHEELS PRESSED STEEL DISCS CENTRE SWIVEL STEM BRACKET TYPE "NL" WITH BRAKE

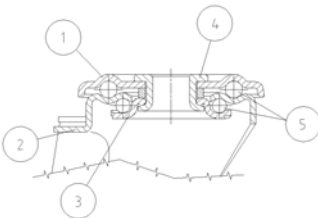
Wheel description



- Tread:** Standard rubber tread; hardness 85 +/-3 Shore A.
Centre: made of two riveted galvanized pressed steel discs.
Hub: the hub is available with plain bore.

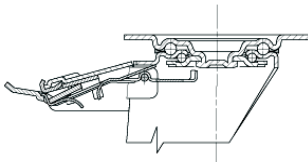
Bracket description

Standard duty bracket type NL (max. carrying capacity 400 daN)



- 1) **Plate:** electrolytically galvanised steel plate
 - 2) **Fork:** electrolytically galvanised steel plate
 - 3) **Ball Racing Ring:** electrolytically galvanised steel plate
 - 4) **King Pin:** incorporated in top plate and cold riveted
 - 5) **Swivel actions:** double ring of greased balls
- Finishing:** electrolytic galvanisation
Fitting: stem

Brake description



Diam. 80-150 mm



Diam. 150-200 mm

Front-locking brake

This brake fully locks wheel and castor rotation.
Thanks to its optimised dimensions and fold-away pedal, the brake is easy to engage and extremely compact.

The hardened carbon steel spring has very high corrosion resistance.