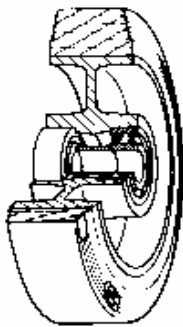


## SERIES 72GS



### SILICONE RUBBER WHEELS FOR HIGH TEMPERATURES ALUMINIUM CENTRE SWIVEL BOLT HOLE BRACKET TYPE “NLX” WITH BRAKE

#### Wheel description



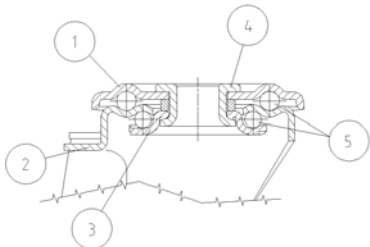
**Tread:** Red non-staining silicone rubber wheels, hardness 80+/-5 Shore A; resistant to temperatures from -30°C and +250°C.

**Centre:** aluminium with threadguards.

**Hub:** The housing is obtained by moulding and turning and contains ball bearings series Z.

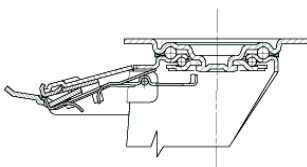
#### Bracket description

**Standard duty bracket type NLX (max. carrying capacity 400 daN)**



- 1) **Plate:** AISI 304 stainless steel
  - 2) **Fork:** AISI 304 stainless steel
  - 3) **Ball Racing Ring:** AISI 304 stainless steel
  - 4) **King Pin:** incorporated in top plate and cold riveted
  - 5) **Swivel actions:** double ring of greased balls
- Fitting:** bolt hole

#### Brake description



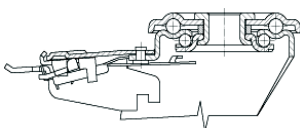
**Diam. 80-150 mm**

#### Front-locking brake

This brake fully locks wheel and castor rotation.

Thanks to its optimised dimensions and fold-away pedal, the brake is easy to engage and extremely compact.

The stainless steel spring has very high corrosion resistance.



**Diam. 150-200 mm**