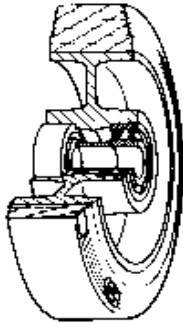


SERIES 72GS



**SILICONE RUBBER WHEELS FOR HIGH TEMPERATURES
ALUMINIUM CENTRE
SWIVEL BOLT HOLE BRACKET TYPE "NLX"**

Wheel description



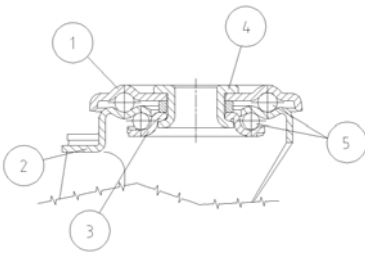
Tread: Red non-staining silicone rubber wheels, hardness 80+/-5 Shore A; resistant to temperatures from -30°C and +250°C.

Centre: aluminium with threadguards.

Hub: The housing is obtained by moulding and turning and contains ball bearings series Z.

Bracket description

Standard duty bracket type NLX (max. carrying capacity 400 daN)



1) **Plate:** AISI 304 stainless steel

2) **Fork:** AISI 304 stainless steel

3) **Ball Racing Ring:** AISI 304 stainless steel

4) **King Pin:** incorporated in top plate and cold riveted

5) **Swivel actions:** double ring of greased balls

Fitting: bolt hole