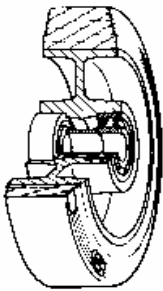


SERIES 72GS



**SILICONE RUBBER WHEELS FOR HIGH TEMPERATURES
ALUMINIUM CENTRE
SWIVEL BOLT HOLE BRACKET TYPE “NL” WITH BRAKE**

Wheel description



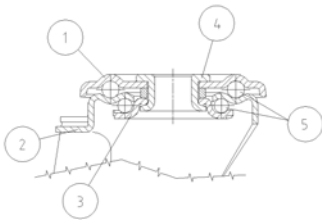
Tread: Red non-staining silicone rubber wheels, hardness 80+/-5 Shore A; resistant to temperatures from -30°C and +250°C.

Centre: aluminium with threadguards.

Hub: The housing is obtained by moulding and turning and contains ball bearings series Z.

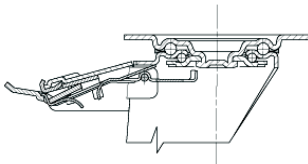
Bracket description

Standard duty bracket type NL (max. carrying capacity 400 daN)



- 1) **Plate:** electrolytically galvanised steel plate
 - 2) **Fork:** electrolytically galvanised steel plate
 - 3) **Ball Racing Ring:** electrolytically galvanised steel plate
 - 4) **King Pin:** incorporated in top plate and cold riveted
 - 5) **Swivel actions:** double ring of greased balls
- Finishing:** electrolytic galvanisation
Fitting: bolt hole

Brake description



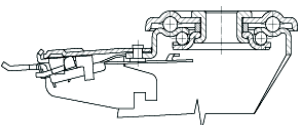
Diam. 80-150 mm

Front-locking brake

This brake fully locks wheel and castor rotation.

Thanks to its optimised dimensions and fold-away pedal, the brake is easy to engage and extremely compact.

The hardened carbon steel spring has very high corrosion resistance.



Diam. 150-200 mm