

Polymer ball transfer unit | Product range

Made from xirodur® B180, for axial loads



Polymer ball transfer unit



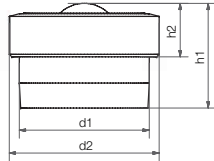
Polymer ball transfer unit



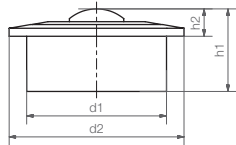
Axial polymer ball transfer unit for high loads (HH)



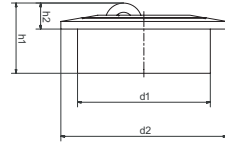
Axial polymer ball transfer unit with soft roller made from xirodur® D180 (HS)



BB-505-B180-POM



BB-522-B180-POM
BB-515-B180-POM



BB-515A-B180-HH/HS
BB-522A-B180-HH/HS

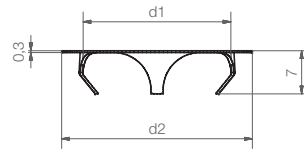
Technical data and dimensions [mm]

Size	Max. stat. bearing load axial [N]	Inner Ø		Height		Weight [g]	Part No.
		d1	d2	h1	h2		
505	35	10.4	12.0	8.4	4.3	0.9	BB-505-B180-POM
515	80	24.0	31.0	21.0	9.8	8.7	BB-515-B180-POM
515A	150	24.0	31.0	14.3	5.3	15.6	BB-515A-B180-□
522	110	36.0	45.0	30.0	9.8	28.8	BB-522-B180-POM
522A	300	36.0	45.0	21.25	7.05	21.7	BB-522A-B180-□

Clamp rings for xiros®-polymer ball transfer units



xiros® clamp rings made from stainless steel offer the possibility to install xiros® ball transfer units in another orientation than the standard horizontal position. Easy assembly and disassembly.

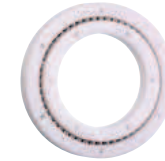


Dimensions [mm]

Part No.	For ball transfer unit	d1	d2	Housing bore
BB-515-CR	BB-515-B180-POM/BB-515A-B180-□	24	31	25.0 -0.2
BB-522-CR	BB-522-B180-POM/BB-522A-B180-□	36	41	37.3 -0.3

Slewing ring bearings | Product range

Made from xirodur® B180, low coefficients of friction



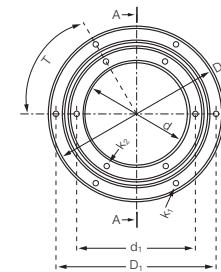
Stainless steel balls



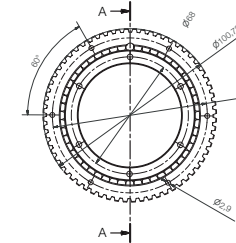
Glass balls



Stainless steel balls, with gear teeth



Standard version



Version with gear teeth

Technical data

Type	Bearing load		Max. speed [rpm]	Weight	
	stat. [N]	dyn. [N]		ES [g]	GL [g]
RT-01-60	800	1,000	250	111.9	98.3
RT-01-60-HDT5	800	1,000	860	110.0	-
RT-01-100	1,250	1,500	250	250.8	231.1

Dimensions [mm]

D	D1	d	d1	H	h	T	K1	K2	Part No.
100	90.0	60	68	17.5	2.5	60	3.3	3.3	BB-RT-01-60-□
100	90.0	60	68	17.5	2.5	60	3.3	3.3	BB-RT-01-60-HDT5-B180-ES
160	150.0	100	110	20	5	60	5.2	5.2	BB-RT-01-100-□



Order example:

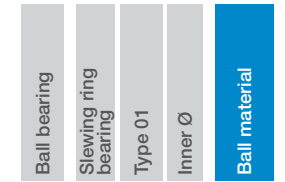
BB-RT-01-60-ES = slewing ring bearing with stainless steel balls



Order key

Type Options

BB-RT-01-60-ES



Options:

Ball material

ES = stainless steel

GL = glass