

EXA
FWD
HNB/G
USB/G
FAB/G
FGB/G
FVB
FWB/G
FHB
FLB
AB
AG
AP/
AD
APK/
ADK
DryAir
EX-
XPLNprf
XPLNprf
HVB/
HVL
SAB/
NAB
LAD/
NAD
Water-
Rela
NP/NAP/
NVP
SNP
CHB/G
MXB/G
Other
valves
SWD/
MWD
DustColl
CVE/
CVSE
CCH /
CPE/D
LifeSci
Gas-
Combus
Auto-
Water
SpecFld
Custom
Ending



Ultra-low temperature 2-port solenoid valve

A2-5800/A2-3400 Series

- NC
- Working fluid: Liquid nitrogen, inert liquids
- Port size: Rc1/4, Rc3/8

Custom order product



- Usable even with ultra-low temperature fluids such as liquid nitrogen (-196°C).
- The coil is a molded coil which is resistant to condensation.
- 3 types are available based on flow rates.

Applications

- Refrigerant control of the thermo-chiller
- Testers and inspection equipment for semiconductors
- Fluorescent X-ray spectrometers
- Biotechnology (containers for cryo-preservation of cells)
- Industrial freezing and refrigerating equipment

Specifications

1 MPa = 10 bar

Descriptions		A2-5800-02-3	A2-5800-02-5	A2-3400-03-12
Working fluid		LN2, inert liquid		
Valve structure		Direct acting poppet structure		Pilot kick poppet structure
Working pressure	MPa	0 (≈0 psi) to 1.0 (≈150 psi)	0 (≈0 psi) to 0.4 (≈58 psi)	0 (≈0 psi, 0 bar) to 0.8 (≈120 psi, 8 bar)
Orifice size	mm	φ3	φ5	φ12
Cv		0.22	0.6	2.7
Port size		Rc1/4		Rc3/8
Fluid temperature		-196 (-320.8°F) to 50 (122°F) (no freezing)		
Ambient temperature		-20 (-4°F) to 40 (104°F)		
Valve seat leakage		100 or less (pneumatic pressure)		400 or less (pneumatic pressure)
Weight		0.65		0.77
Mounting orientation		Vertical position with coil on top		
Rated voltage		100 VAC, 200 VAC (full-wave rectification coil), 12 VDC, 24 VDC		
Power consumption		17 W		AC:17 W, DC:15 W

⚠ Caution

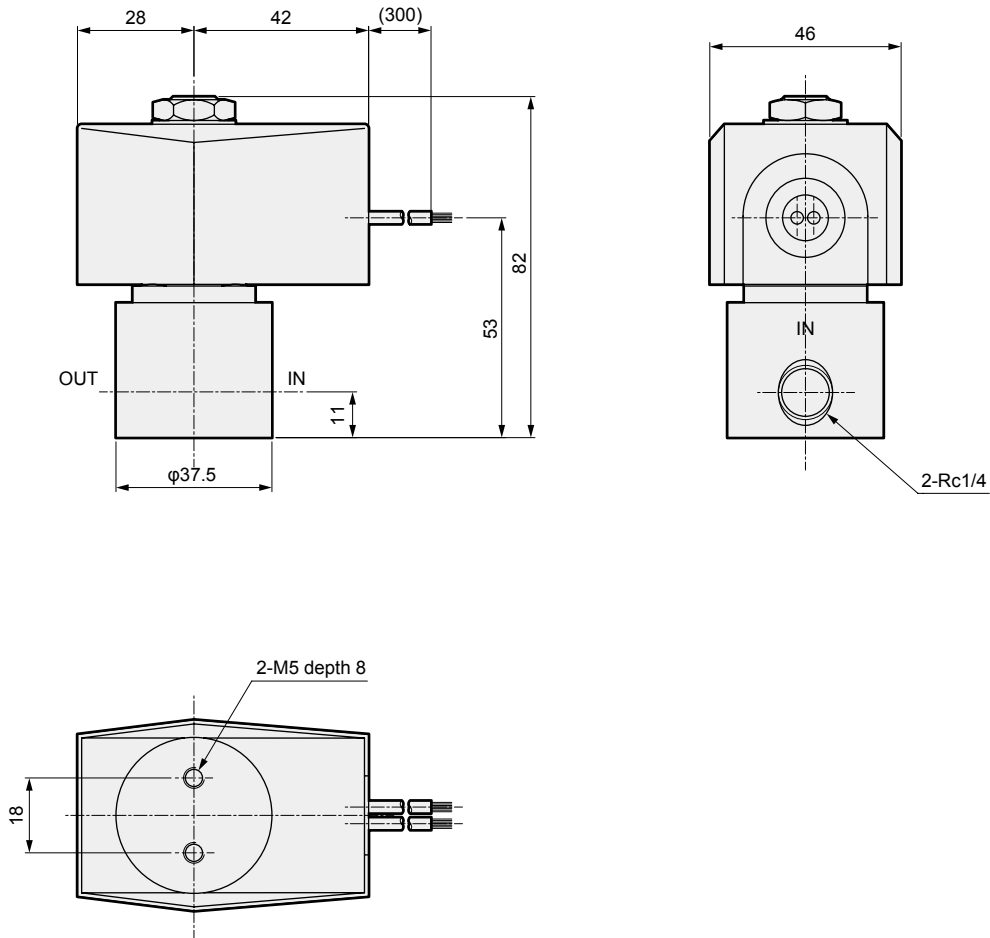
(1) Be careful when piping as malfunctions may occur when the moisture inside wet air condenses and freezes.

Ultra-low temperature 2-port solenoid valve

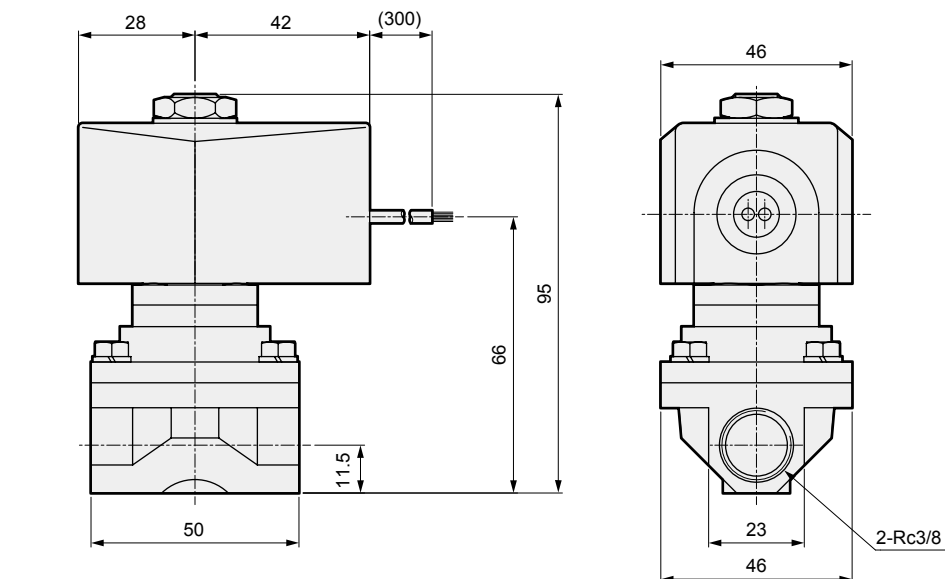
Custom order product

Dimensions

● A2-5800



● A2-3400



EXA
FWD
HNB/G
USB/G
FAB/G
FGB/G
FVB
FWB/G
FHB
FLB
AB
AG
AP/ AD
APK/ ADK
DryAir
EX- XPLNprf
XPLNprf
HVB/ HVL
S ∇ B/ NAB
LAD/ NAD
Water- Rela
NP/NAP/ NVP
SNP
CHB/G
MXB/G
Other valves
SWD/ MWD
DustColl
CVE/ CVSE
CCH / CPE/D
LifeSci
Gas- Combus
Auto- Water
SpecFld
Custom
Ending