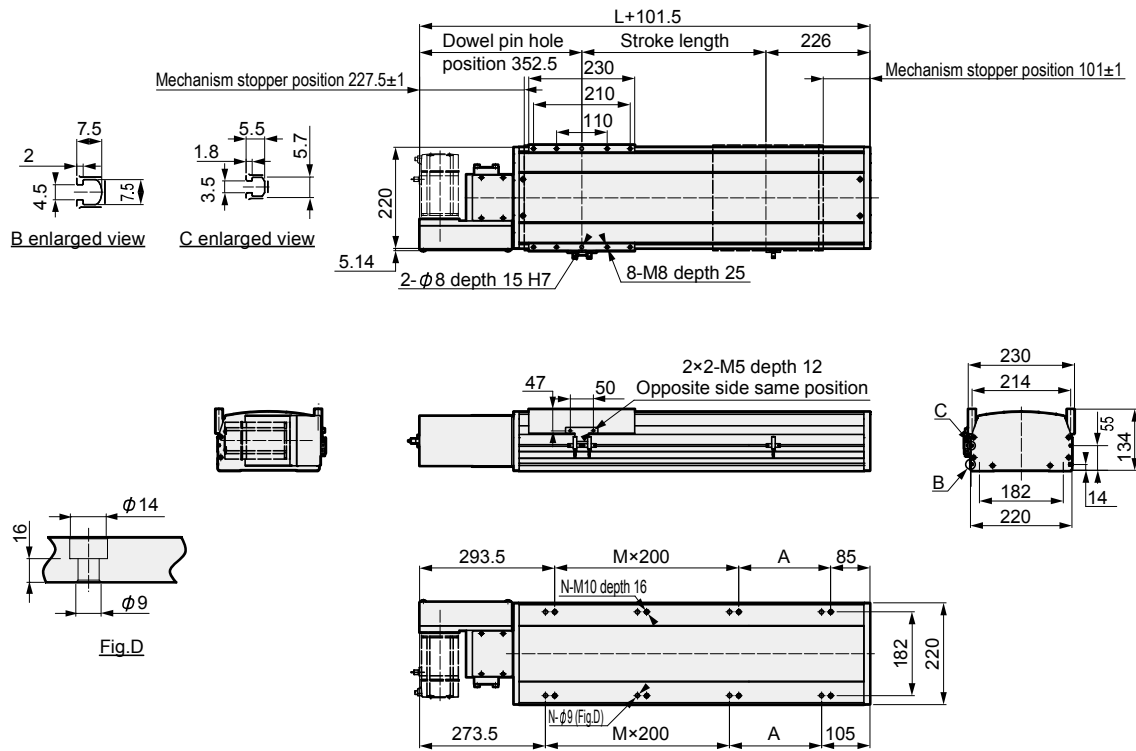


Dimensions (ETV-22)

- ETV-22-**-R (Motor installation methods: Right installation)



Note: Refer to page 32 for motor installation part dimensions.

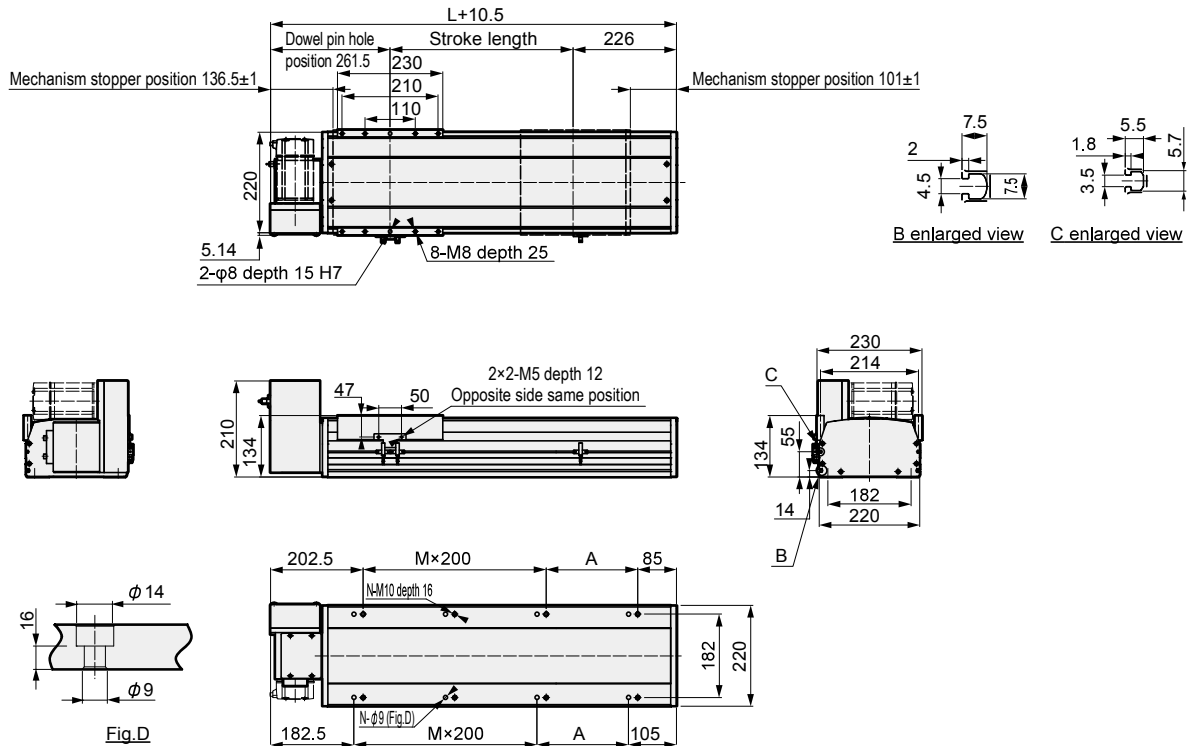
Stroke length (mm)	100	150	200	250	300	350	400	450	500	550	600	650	700	750	800	850	900	950	1000	1050	1100	1150	1200	1250	1300	1350	1400	1450	1500	1550
L	577	627	677	727	777	827	877	927	977	1027	1077	1127	1177	1227	1277	1327	1377	1427	1477	1527	1577	1627	1677	1727	1777	1827	1877	1927	1977	2027
A	100	150	200	50	100	150	200	50	100	150	200	50	100	150	200	50	100	150	200	50	100	150	200	50	100	150	200	50	100	150
M	1	1	1	2	2	2	2	3	3	3	3	4	4	4	4	5	5	5	5	6	6	6	6	7	7	7	7	8	8	8
N	6	6	6	8	8	8	8	10	10	10	10	12	12	12	12	14	14	14	14	16	16	16	16	18	18	18	18	20	20	20
Weight (kg)	30.0	31.2	32.4	33.6	34.8	36.0	37.2	38.4	39.6	40.8	42.0	43.2	44.4	45.6	46.8	48.0	49.2	50.4	51.6	52.8	54.0	55.2	56.4	57.6	58.8	60.0	61.2	62.4	63.6	64.8

Stroke length (mm)	1600	1650	1700	1750	1800	1850	1900	1950	2000	2050	2100	2150	2200	2250	2300	2350	2400	2450	2500	2550	2600	2650	2700	2750	2800	2850	2900	2950	3000	3050
L	2077	2127	2177	2227	2277	2327	2377	2427	2477	2527	2577	2627	2677	2727	2777	2827	2877	2927	2977	3027	3077	3127	3177	3227	3277	3327	3377	3427	3477	3527
A	200	50	100	150	200	50	100	150	200	50	100	150	200	50	100	150	200	50	100	150	200	50	100	150	200	50	100	150	200	50
M	8	9	9	9	9	10	10	10	10	11	11	11	11	12	12	12	12	13	13	13	13	14	14	14	14	15	15	15	15	16
N	20	22	22	22	22	24	24	24	24	26	26	26	26	28	28	28	28	30	30	30	30	32	32	32	32	34	34	34	34	36
Weight (kg)	66.0	67.2	68.4	69.6	70.8	72.0	73.2	74.4	75.6	76.8	78.0	79.2	80.4	81.6	82.8	84.0	85.2	86.4	87.6	88.8	90.0	91.2	92.4	93.6	94.8	96.0	97.2	98.4	99.6	100.8

Stroke length (mm)	3100	3150	3200	3250	3300	3350	3400	3450	3500
L	3577	3627	3677	3727	3777	3827	3877	3927	3977
A	100	150	200	50	100	150	200	50	100
M	16	16	16	17	17	17	17	18	18
N	36	36	36	38	38	38	38	40	40
Weight (kg)	102.0	103.2	104.4	105.6	106.8	108.0	109.2	110.4	111.6

Dimensions (ETV-22)

- ETV-22-**-S (Motor installation methods: Upper right installation)



Note: Refer to page 32 for motor installation part dimensions.

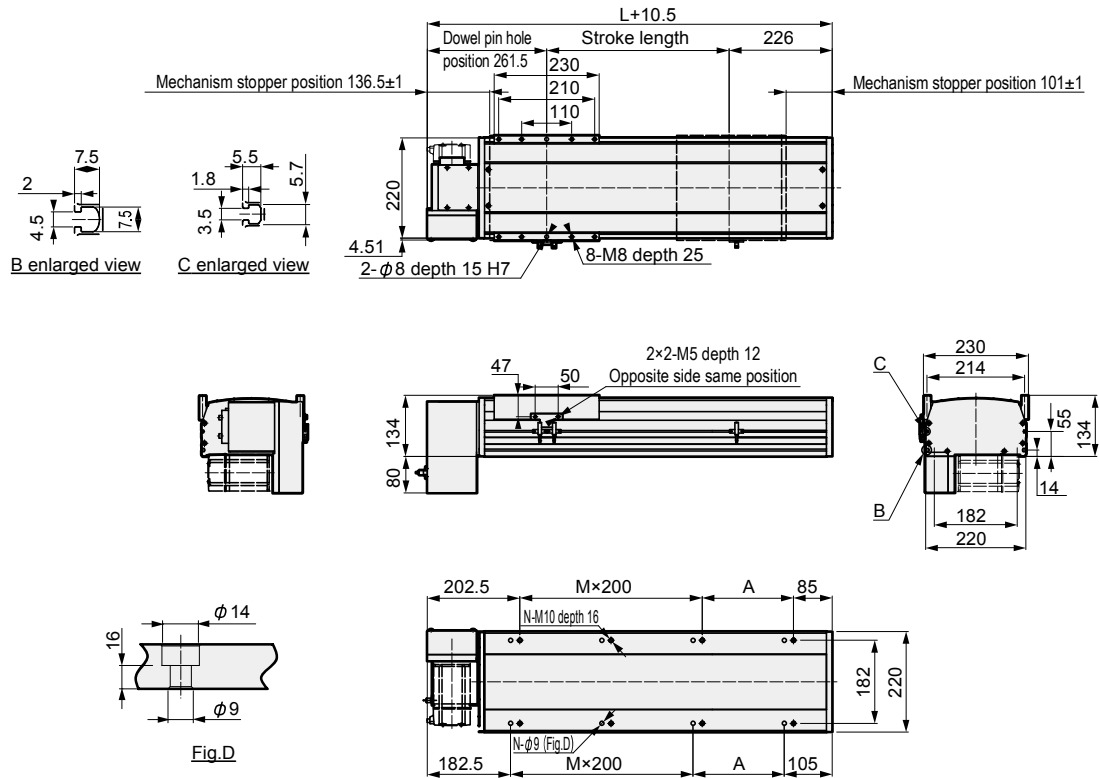
Stroke length (mm)	100	150	200	250	300	350	400	450	500	550	600	650	700	750	800	850	900	950	1000	1050	1100	1150	1200	1250	1300	1350	1400	1450	1500	1550
L	577	627	677	727	777	827	877	927	977	1027	1077	1127	1177	1227	1277	1327	1377	1427	1477	1527	1577	1627	1677	1727	1777	1827	1877	1927	1977	2027
A	100	150	200	50	100	150	200	50	100	150	200	50	100	150	200	50	100	150	200	50	100	150	200	50	100	150	200	50	100	150
M	1	1	1	2	2	2	2	3	3	3	3	4	4	4	4	5	5	5	5	6	6	6	6	7	7	7	7	8	8	8
N	6	6	6	8	8	8	8	10	10	10	10	12	12	12	12	14	14	14	14	16	16	16	16	18	18	18	18	20	20	20
Weight (kg)	30.0	31.2	32.4	33.6	34.8	36.0	37.2	38.4	39.6	40.8	42.0	43.2	44.4	45.6	46.8	48.0	49.2	50.4	51.6	52.8	54.0	55.2	56.4	57.6	58.8	60.0	61.2	62.4	63.6	64.8

Stroke length (mm)	1600	1650	1700	1750	1800	1850	1900	1950	2000	2050	2100	2150	2200	2250	2300	2350	2400	2450	2500	2550	2600	2650	2700	2750	2800	2850	2900	2950	3000	3050
L	2077	2127	2177	2227	2277	2327	2377	2427	2477	2527	2577	2627	2677	2727	2777	2827	2877	2927	2977	3027	3077	3127	3177	3227	3277	3327	3377	3427	3477	3527
A	200	50	100	150	200	50	100	150	200	50	100	150	200	50	100	150	200	50	100	150	200	50	100	150	200	50	100	150	200	50
M	8	9	9	9	9	10	10	10	10	11	11	11	11	12	12	12	12	13	13	13	13	14	14	14	14	15	15	15	15	16
N	20	22	22	22	22	24	24	24	24	26	26	26	26	28	28	28	28	30	30	30	30	32	32	32	32	34	34	34	34	36
Weight (kg)	66.0	67.2	68.4	69.6	70.8	72.0	73.2	74.4	75.6	76.8	78.0	79.2	80.4	81.6	82.8	84.0	85.2	86.4	87.6	88.8	90.0	91.2	92.4	93.6	94.8	96.0	97.2	98.4	99.6	100.8

Stroke length (mm)	3100	3150	3200	3250	3300	3350	3400	3450	3500
L	3577	3627	3677	3727	3777	3827	3877	3927	3977
A	100	150	200	50	100	150	200	50	100
M	16	16	16	17	17	17	17	18	18
N	36	36	36	38	38	38	38	40	40
Weight (kg)	102.0	103.2	104.4	105.6	106.8	108.0	109.2	110.4	111.6

Dimensions (ETV-22)

- ETV-22-**-T (Motor installation methods: Lower right installation)

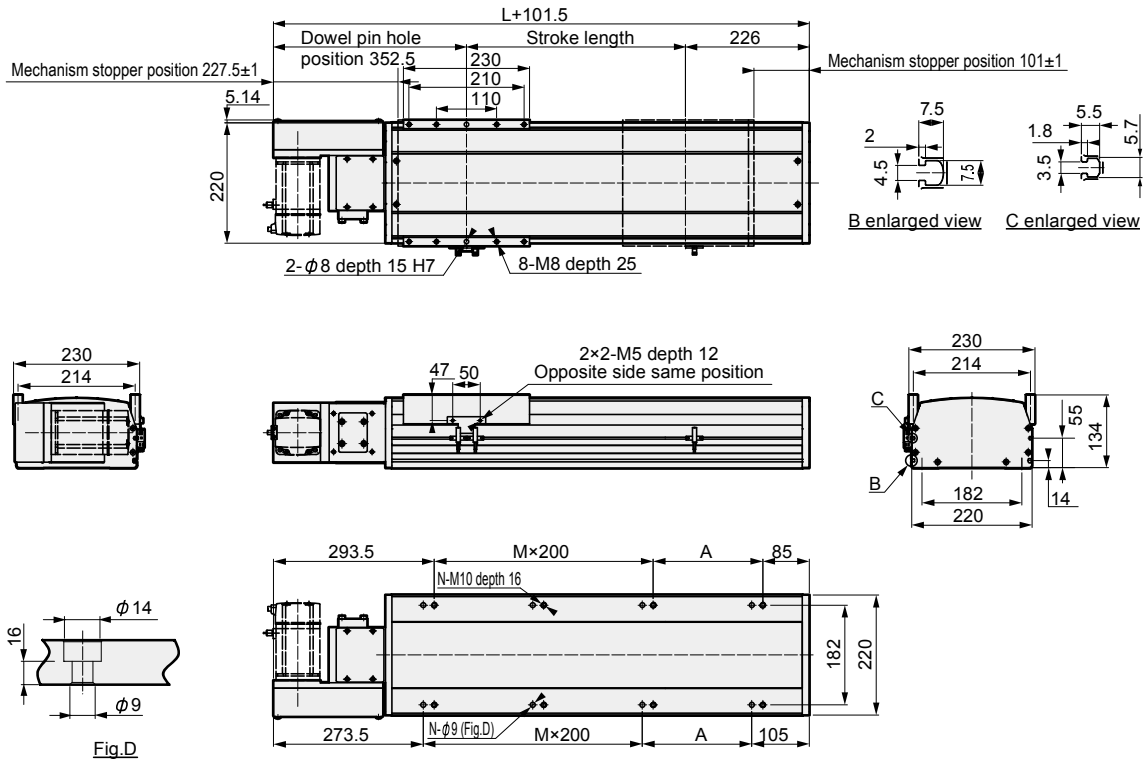


Note: Refer to page 32 for motor installation part dimensions.

Stroke length (mm)	100	150	200	250	300	350	400	450	500	550	600	650	700	750	800	850	900	950	1000	1050	1100	1150	1200	1250	1300	1350	1400	1450	1500	1550
L	577	627	677	727	777	827	877	927	977	1027	1077	1127	1177	1227	1277	1327	1377	1427	1477	1527	1577	1627	1677	1727	1777	1827	1877	1927	1977	2027
A	100	150	200	50	100	150	200	50	100	150	200	50	100	150	200	50	100	150	200	50	100	150	200	50	100	150	200	50	100	150
M	1	1	1	2	2	2	2	3	3	3	3	4	4	4	4	5	5	5	5	6	6	6	6	7	7	7	7	8	8	8
N	6	6	6	8	8	8	8	10	10	10	10	12	12	12	12	14	14	14	14	16	16	16	16	18	18	18	18	20	20	20
Weight (kg)	30.0	31.2	32.4	33.6	34.8	36.0	37.2	38.4	39.6	40.8	42.0	43.2	44.4	45.6	46.8	48.0	49.2	50.4	51.6	52.8	54.0	55.2	56.4	57.6	58.8	60.0	61.2	62.4	63.6	64.8
Stroke length (mm)	1600	1650	1700	1750	1800	1850	1900	1950	2000	2050	2100	2150	2200	2250	2300	2350	2400	2450	2500	2550	2600	2650	2700	2750	2800	2850	2900	2950	3000	3050
L	2077	2127	2177	2227	2277	2327	2377	2427	2477	2527	2577	2627	2677	2727	2777	2827	2877	2927	2977	3027	3077	3127	3177	3227	3277	3327	3377	3427	3477	3527
A	200	50	100	150	200	50	100	150	200	50	100	150	200	50	100	150	200	50	100	150	200	50	100	150	200	50	100	150	200	50
M	8	9	9	9	9	10	10	10	10	11	11	11	11	12	12	12	12	13	13	13	13	14	14	14	14	15	15	15	15	16
N	20	22	22	22	22	24	24	24	24	26	26	26	26	28	28	28	28	30	30	30	30	32	32	32	32	34	34	34	34	36
Weight (kg)	66.0	67.2	68.4	69.6	70.8	72.0	73.2	74.4	75.6	76.8	78.0	79.2	80.4	81.6	82.8	84.0	85.2	86.4	87.6	88.8	90.0	91.2	92.4	93.6	94.8	96.0	97.2	98.4	99.6	100.8
Stroke length (mm)	3100	3150	3200	3250	3300	3350	3400	3450	3500																					
L	3577	3627	3677	3727	3777	3827	3877	3927	3977																					
A	100	150	200	50	100	150	200	50	100																					
M	16	16	16	17	17	17	17	18	18																					
N	36	36	36	38	38	38	38	40	40																					
Weight (kg)	102.0	103.2	104.4	105.6	106.8	108.0	109.2	110.4	111.6																					

Dimensions (ETV-22)

- ETV-22-**-L (Motor installation methods: Left installation)



Note: Refer to page 32 for motor installation part dimensions.

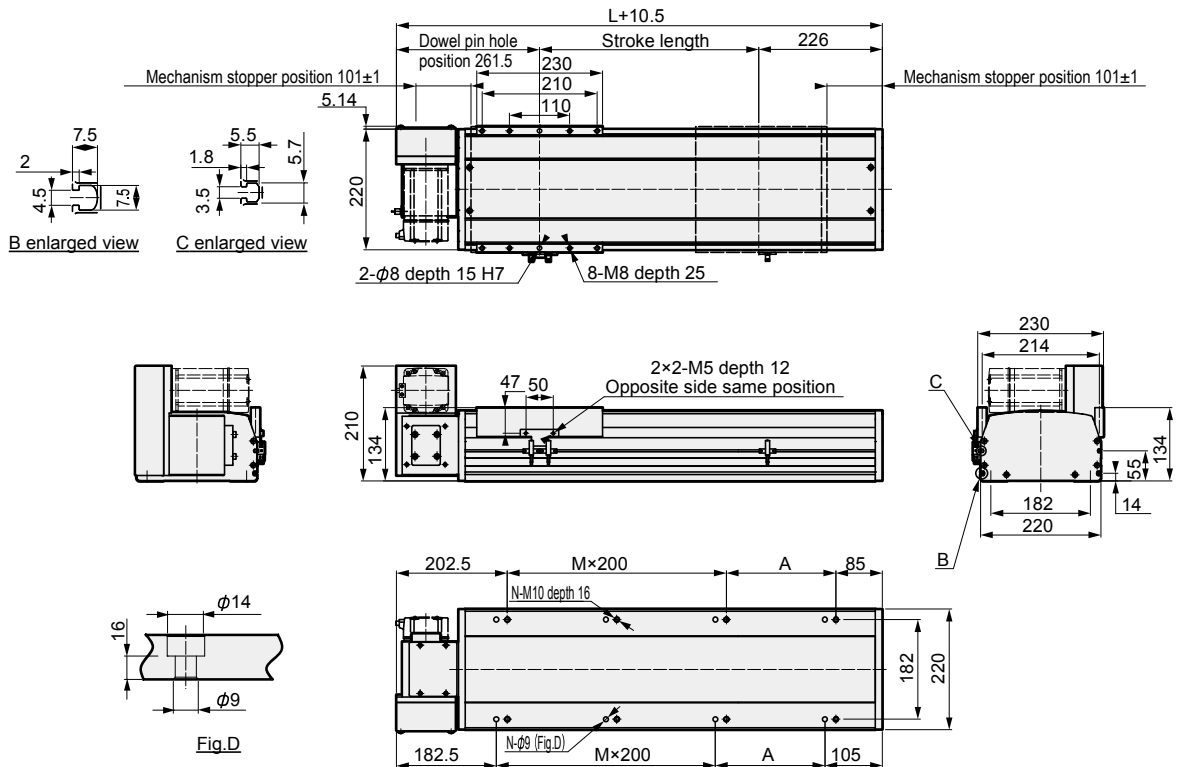
Stroke length (mm)	100	150	200	250	300	350	400	450	500	550	600	650	700	750	800	850	900	950	1000	1050	1100	1150	1200	1250	1300	1350	1400	1450	1500	1550
L	577	627	677	727	777	827	877	927	977	1027	1077	1127	1177	1227	1277	1327	1377	1427	1477	1527	1577	1627	1677	1727	1777	1827	1877	1927	1977	2027
A	100	150	200	50	100	150	200	50	100	150	200	50	100	150	200	50	100	150	200	50	100	150	200	50	100	150	200	50	100	150
M	1	1	1	2	2	2	2	3	3	3	3	4	4	4	4	5	5	5	5	6	6	6	6	7	7	7	7	8	8	8
N	6	6	6	8	8	8	8	10	10	10	10	12	12	12	12	14	14	14	14	16	16	16	16	18	18	18	18	20	20	20
Weight (kg)	30.0	31.2	32.4	33.6	34.8	36.0	37.2	38.4	39.6	40.8	42.0	43.2	44.4	45.6	46.8	48.0	49.2	50.4	51.6	52.8	54.0	55.2	56.4	57.6	58.8	60.0	61.2	62.4	63.6	64.8

Stroke length (mm)	1600	1650	1700	1750	1800	1850	1900	1950	2000	2050	2100	2150	2200	2250	2300	2350	2400	2450	2500	2550	2600	2650	2700	2750	2800	2850	2900	2950	3000	3050
L	2077	2127	2177	2227	2277	2327	2377	2427	2477	2527	2577	2627	2677	2727	2777	2827	2877	2927	2977	3027	3077	3127	3177	3227	3277	3327	3377	3427	3477	3527
A	200	50	100	150	200	50	100	150	200	50	100	150	200	50	100	150	200	50	100	150	200	50	100	150	200	50	100	150	200	50
M	8	9	9	9	9	10	10	10	10	11	11	11	11	12	12	12	12	13	13	13	13	14	14	14	14	15	15	15	15	16
N	20	22	22	22	22	24	24	24	24	26	26	26	26	28	28	28	28	30	30	30	30	32	32	32	32	34	34	34	34	36
Weight (kg)	66.0	67.2	68.4	69.6	70.8	72.0	73.2	74.4	75.6	76.8	78.0	79.2	80.4	81.6	82.8	84.0	85.2	86.4	87.6	88.8	90.0	91.2	92.4	93.6	94.8	96.0	97.2	98.4	99.6	100.8

Stroke length (mm)	3100	3150	3200	3250	3300	3350	3400	3450	3500
L	3577	3627	3677	3727	3777	3827	3877	3927	3977
A	100	150	200	50	100	150	200	50	100
M	16	16	16	17	17	17	17	18	18
N	36	36	36	38	38	38	38	40	40
Weight (kg)	102.0	103.2	104.4	105.6	106.8	108.0	109.2	110.4	111.6

Dimensions (ETV-22)

- ETV-22-**-V (Motor installation methods: Upper left installation)

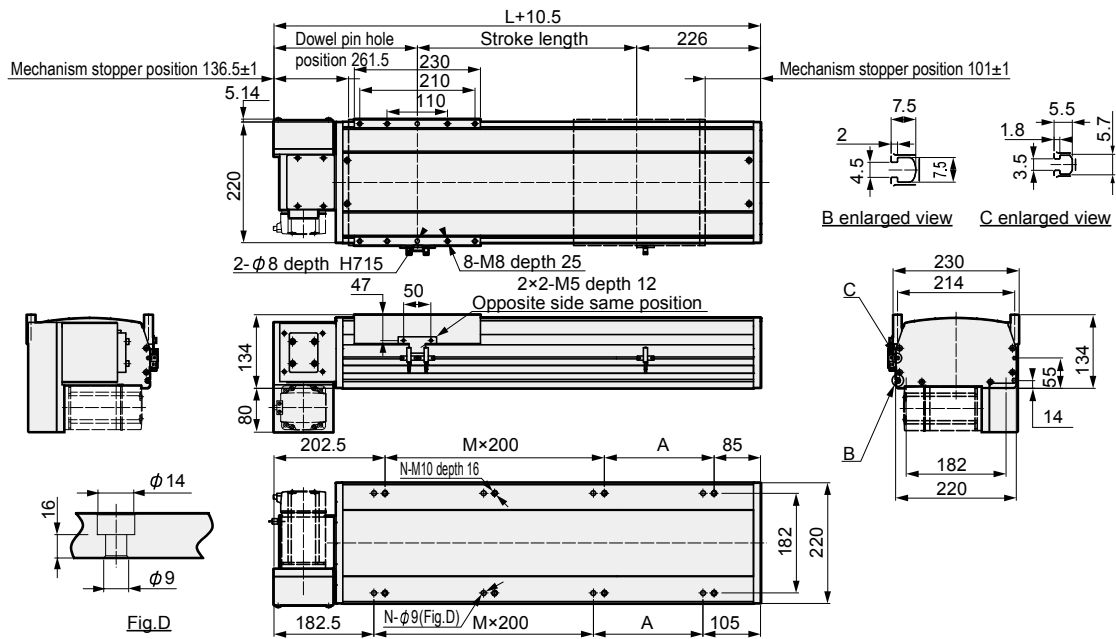


Note: Refer to page 32 for motor installation part dimensions.

Stroke length (mm)	100	150	200	250	300	350	400	450	500	550	600	650	700	750	800	850	900	950	1000	1050	1100	1150	1200	1250	1300	1350	1400	1450	1500	1550
L	577	627	677	727	777	827	877	927	977	1027	1077	1127	1177	1227	1277	1327	1377	1427	1477	1527	1577	1627	1677	1727	1777	1827	1877	1927	1977	2027
A	100	150	200	50	100	150	200	50	100	150	200	50	100	150	200	50	100	150	200	50	100	150	200	50	100	150	200	50	100	150
M	1	1	1	2	2	2	2	3	3	3	3	4	4	4	4	5	5	5	5	6	6	6	6	7	7	7	7	8	8	8
N	6	6	6	8	8	8	8	10	10	10	10	12	12	12	12	14	14	14	14	16	16	16	16	18	18	18	18	20	20	20
Weight (kg)	30.0	31.2	32.4	33.6	34.8	36.0	37.2	38.4	39.6	40.8	42.0	43.2	44.4	45.6	46.8	48.0	49.2	50.4	51.6	52.8	54.0	55.2	56.4	57.6	58.8	60.0	61.2	62.4	63.6	64.8
Stroke length (mm)	1600	1650	1700	1750	1800	1850	1900	1950	2000	2050	2100	2150	2200	2250	2300	2350	2400	2450	2500	2550	2600	2650	2700	2750	2800	2850	2900	2950	3000	3050
L	2077	2127	2177	2227	2277	2327	2377	2427	2477	2527	2577	2627	2677	2727	2777	2827	2877	2927	2977	3027	3077	3127	3177	3227	3277	3327	3377	3427	3477	3527
A	200	50	100	150	200	50	100	150	200	50	100	150	200	50	100	150	200	50	100	150	200	50	100	150	200	50	100	150	200	50
M	8	9	9	9	9	10	10	10	10	11	11	11	11	12	12	12	12	13	13	13	13	14	14	14	14	15	15	15	15	16
N	20	22	22	22	22	24	24	24	24	26	26	26	26	28	28	28	28	30	30	30	30	32	32	32	32	34	34	34	34	36
Weight (kg)	66.0	67.2	68.4	69.6	70.8	72.0	73.2	74.4	75.6	76.8	78.0	79.2	80.4	81.6	82.8	84.0	85.2	86.4	87.6	88.8	90.0	91.2	92.4	93.6	94.8	96.0	97.2	98.4	99.6	100.8
Stroke length (mm)	3100	3150	3200	3250	3300	3350	3400	3450	3500																					
L	3577	3627	3677	3727	3777	3827	3877	3927	3977																					
A	100	150	200	50	100	150	200	50	100																					
M	16	16	16	17	17	17	17	18	18																					
N	36	36	36	38	38	38	38	40	40																					
Weight (kg)	102.0	103.2	104.4	105.6	106.8	108.0	109.2	110.4	111.6																					

Dimensions (ETV-22)

- ETV-22-**-W (Motor installation methods: Lower left installation)



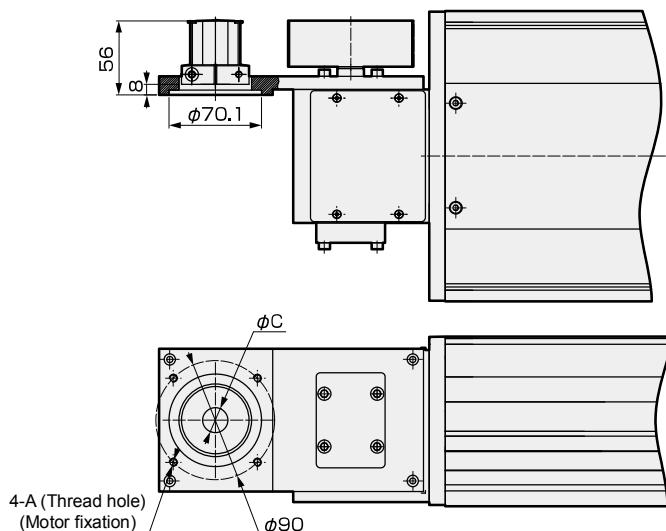
Stroke length (mm)	100	150	200	250	300	350	400	450	500	550	600	650	700	750	800	850	900	950	1000	1050	1100	1150	1200	1250	1300	1350	1400	1450	1500	1550
L	577	627	677	727	777	827	877	927	977	1027	1077	1127	1177	1227	1277	1327	1377	1427	1477	1527	1577	1627	1677	1727	1777	1827	1877	1927	1977	2027
A	100	150	200	50	100	150	200	50	100	150	200	50	100	150	200	50	100	150	200	50	100	150	200	50	100	150	200	50	100	150
M	1	1	1	2	2	2	2	3	3	3	3	4	4	4	4	5	5	5	5	6	6	6	6	7	7	7	7	8	8	8
N	6	6	6	8	8	8	8	8	10	10	10	12	12	12	12	14	14	14	14	16	16	16	16	18	18	18	18	20	20	20
Weight (kg)	30.0	31.2	32.4	33.6	34.8	36.0	37.2	38.4	39.6	40.8	42.0	43.2	44.4	45.6	46.8	48.0	49.2	50.4	51.6	52.8	54.0	55.2	56.4	57.6	58.8	60.0	61.2	62.4	63.6	64.8

Stroke length (mm)	1600	1650	1700	1750	1800	1850	1900	1950	2000	2050	2100	2150	2200	2250	2300	2350	2400	2450	2500	2550	2600	2650	2700	2750	2800	2850	2900	2950	3000	3050
L	2077	2127	2177	2227	2277	2327	2377	2427	2477	2527	2577	2627	2677	2727	2777	2827	2877	2927	2977	3027	3077	3127	3177	3227	3277	3327	3377	3427	3477	3527
A	200	50	100	150	200	50	100	150	200	50	100	150	200	50	100	150	200	50	100	150	200	50	100	150	200	50	100	150	200	50
M	8	9	9	9	9	10	10	10	10	11	11	11	11	12	12	12	12	13	13	13	13	14	14	14	14	15	15	15	15	16
N	20	22	22	22	22	24	24	24	24	26	26	26	26	28	28	28	28	30	30	30	30	32	32	32	32	34	34	34	34	36
Weight (kg)	66.0	67.2	68.4	69.6	70.8	72.0	73.2	74.4	75.6	76.8	78.0	79.2	80.4	81.6	82.8	84.0	85.2	86.4	87.6	88.8	90.0	91.2	92.4	93.6	94.8	96.0	97.2	98.4	99.6	100.8

Stroke length (mm)	3100	3150	3200	3250	3300	3350	3400	3450	3500
L	3577	3627	3677	3727	3777	3827	3877	3927	3977
A	100	150	200	50	100	150	200	50	100
M	16	16	16	17	17	17	17	18	18
N	36	36	36	38	38	38	38	40	40
Weight (kg)	102.0	103.2	104.4	105.6	106.8	108.0	109.2	110.4	111.6

Motor installation part Dimensions (ETV-22)

- ETV-22-R/S/T/L/V/W



ETV-10-R/S/T/L/V/W				
Installation motor specifications	A	B	C	Motor screw
M 750W	M6	φ90	φ19	4-M6×L12
Y 750W	M6	φ90	φ19	4-M6×L12
P 750W	M5	φ90	φ19	4-M5×L12