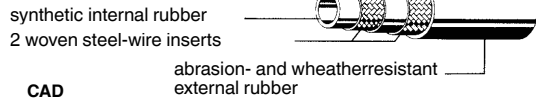
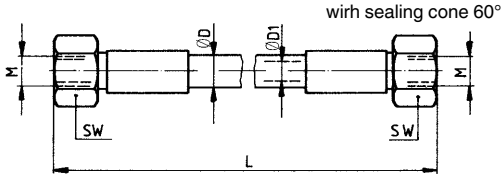


No. 6985

High Pressure Hose

max. operating pressure 400 bar.



Order no.	Article no.	Test pressure [bar]	Bending radius min. [mm]	dia. D [mm]	dia. D1 [mm]	L [mm]	M	SW [mm]	Weight [g]
174177	6985-300	1000	100	15	6	300	M12x1,5	17	100
68510	6985-500	1000	100	15	6	500	M12x1,5	17	300
68528	6985-800	1000	100	15	6	800	M12x1,5	17	405
68536	6985-1250	1000	100	15	6	1250	M12x1,5	17	570
68544	6985-2000	1000	100	15	6	2000	M12x1,5	17	855

Design:

Steel fittings, galvanized and passivated.

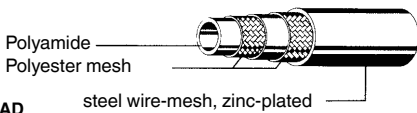
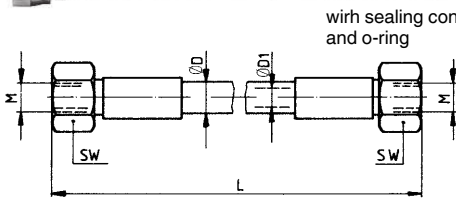
Note:

This high pressure hose is especially selected for clamping on machine tools. It contains two steelwire reinforcements which guarantee that there is no loss of oil even if the external rubber is damaged. The period of use of a hydraulic hose, including any storage period should not exceed six years. The serviceability must be assessed to fixed inspection criteria. See DIN 20066, Part 5 for further details.

No. 6985K

High Pressure Hose with steel-wire interlace

Max. operating pressure dyn. at +50°C 500 bar



Order no.	Article no.	Test pressure [bar]	Bending radius min. [mm]	dia. D [mm]	dia. D1 [mm]	L [mm]	M	SW [mm]	Weight [g]
68551	6985K-300	960	35	9,4	4	300	M16x1,5	19	100
68569	6985K-500	960	35	9,4	4	500	M16x1,5	19	300
68577	6985K-800	960	35	9,4	4	800	M16x1,5	19	400
68585	6985K-1250	960	35	9,4	4	1250	M16x1,5	19	570
68593	6985K-2000	960	35	9,4	4	2000	M16x1,5	19	850
68601	6985K-3000	960	35	9,4	4	3000	M16x1,5	19	1200

Design:

Steel fittings, galvanized and passivated. Hose of synthetic material with steel-wire braid galvanized.

Application:

Insert hose and tighten with 1/4 turn maximum.

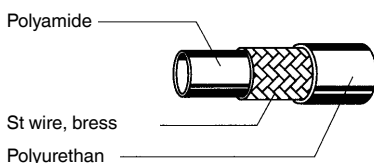
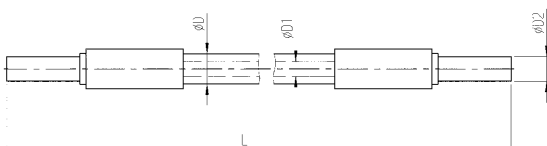
Note:

We recommend only using the 3-metre long high pressure hose for double-acting elements. Fitting suitable for pipe connection No. 6994. The period of use of a hydraulic hose, including any storage period, should not exceed six years. The serviceability must be assessed according to fixed inspection criteria. See DIN 20066, Section 5 for further details.

No. 6985R

High Pressure Hose

Max. operating pressure dyn. at +50°C 375 bar



Order no.	Test pressure [bar]	Bending radius min. [mm]	dia. D [mm]	dia. D1 [mm]	dia. D2 [mm]	L [mm]	Weight [g]
63198	750	30	9,8	4,8	8	300	65
63206	750	30	9,8	4,8	8	500	90
63214	750	30	9,8	4,8	8	800	120
63222	750	30	9,8	4,8	8	1250	180
63230	750	30	9,8	4,8	8	2000	265
63248	750	30	9,8	4,8	8	3000	380

Design:

Steel fitting, galvanized and passivated. Hose of synthetic material with high tensile brass steel-wire braid.

Application:

Insert hose and tighten with 1/4 turn maximum.

Note:

We recommend only using the 3-metre long high pressure hose for double-acting elements. These high pressure hoses can be used directly in pipe connections. The period of use of a hydraulic hose, including any storage period, should not exceed six years. The serviceability must be assessed according to fixed inspection criteria. See DIN 20066, Section 5 for further details.