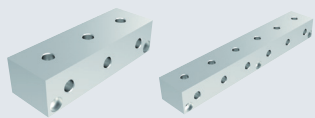


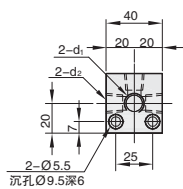


L5
歧管块

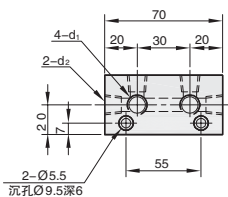


按图定制

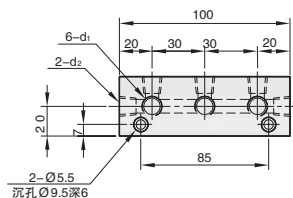
①代号	边长	④材质	⑤表面处理	最高使用压力
MALBEP	30×40	铝合金	-	1MPa≈10.2Kgf/cm ² 以下



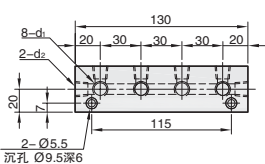
1孔



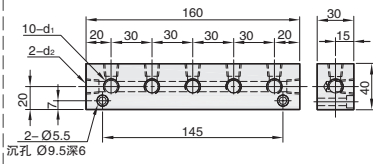
2孔



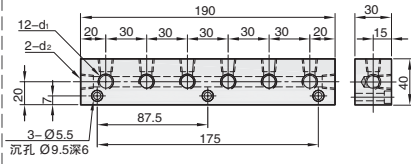
3孔



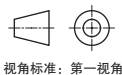
4孔



5孔



6孔



视角标准：第一视角



①代号 - ②侧面孔数K - ③螺纹代号L
MALBEP - K2 - L22

①代号	②侧面孔数K	③螺纹代号L	d ₁	d ₂
			Rc(PT)	Rc(PT)
MALBEP (30×40)	1	22	1/4	1/4
		11	1/8	1/8
	2	12	1/8	1/4
		22	1/4	1/4
	3	11	1/8	1/8
		12	1/8	1/4
	4	22	1/4	1/4
		12	1/8	1/4
	5	22	1/4	1/4
		12	1/8	1/4
	6	12	1/8	1/4
		22	1/4	1/4

▲ 螺纹代号：如12，表示d₁为1/8管螺纹，d₂为1/4管螺纹。

