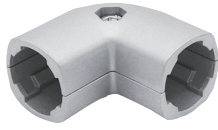


# 精益管 - 连接件

## 90°外接头 / 90°活动外接头

### ■ 90°外接头

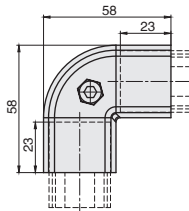
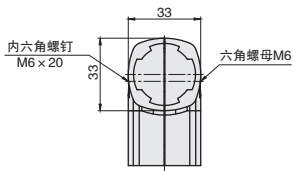


库存

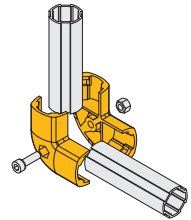
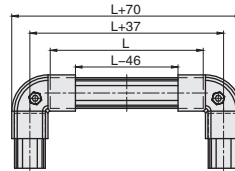
材质

铝合金 ADC12

● 用于两根精益管 90 度的连接。



ex.  
安装示例



代号	参考重量 (g)
AAJ28-A90	98

### ■ 90°活动外接头

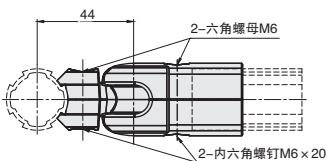
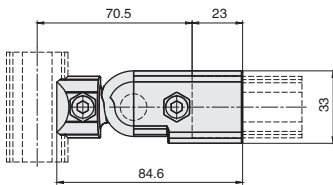


库存

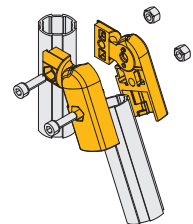
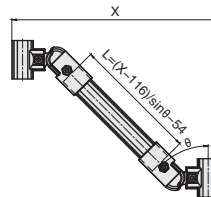
材质

铝合金 ADC12

● 安装紧固后可以在 90 度范围内作扇形旋转、运动的接头。



ex.  
安装示例



代号	参考重量 (g)
AAJ28-A90D	130